



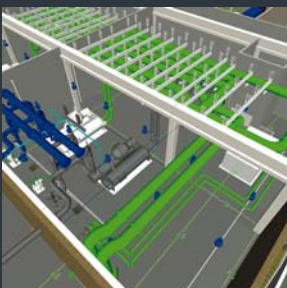
MAY 2010



This Month's Technical Presentation:

BIM—3D Modeling

Presentation on the use of BIM previewing some of the ways it is being used in the construction and facilities industries, and where the industry is going which includes linking the BIM model to facility operations and maintenance. This new technology presents both tremendous value and numerous challenges to the facility manager – come see what the use of BIM will mean to you in the future.



this issue

Meeting Logistics **P.2**

BIM for MEP **P.3**

Member spotlight **P.8**

Career Info **P.9**

Upcoming Events **P.10**

May Tour - UMass Medical Ambulatory Care Center Worcester, MA. Thursday, May 20th, 2010 @5:30PM

In May AFE 74 will tour the newly built ACC center at The Worcester UMass Campus . The Ambulatory Care Center (formerly known as the Advanced Center for Clinical Care, Education and Sciences or ACCES) is a seven-story, 258,000-square-foot building that will house a mix of ambulatory clinical care centers and clinical and translational research programs; departments are scheduled to move in beginning in the fall of 2009 through summer 2010.

Located on the south side of the University campus across from the main UMass Memorial Medical Center facility. Architecturally, ACC compliments the existing campus buildings and is being built to meet environmentally sus-

tainable standards ([LEED](#) Silver). The design maximizes natural light and views of the campus and nearby Lake Quinsigamond, with floor-to-ceiling windows throughout.

We will also get to hear about UMass' newest project ,The \$400-million Albert Sherman Center will expand and unify the UMass Medical School's Worcester campus, double its research capacity and support the school's new learner-centered curriculum. This interdisciplinary, state-of-the-art research and education facility will foster interaction and collaboration among scientists and promote innovation and synergies across disciplines.

Meeting Logistics

Please park in the Pine Tree lot and meet in the main lobby of the UMASS medical school building. Tour starts at 5:30 PM . After the tour a meeting, dinner and BIM presentation will be held at UMASS Meeting room S2- 531\532 .

Meeting cost is \$30.00 members that rsvp, \$35.00 for walk ins and guests

Please pay the Chapter Treasurer at the event. Cash and Checks accepted. No shows will be charged if applicable. Make checks payable to "AFE Chapter 74"

You can also sign up on line and pay by credit card at

www.afe.org/chapter74

RSVP* to Tom Wall
AFE #74 Secretary

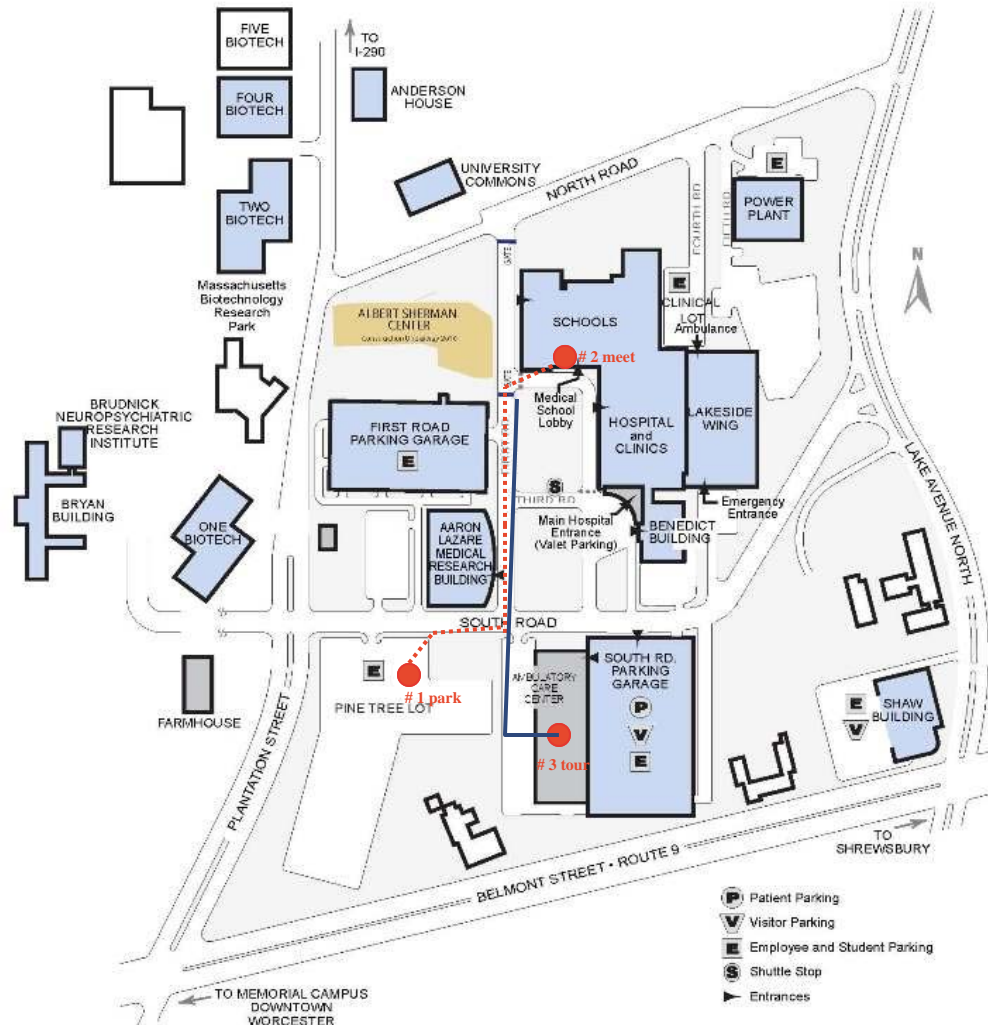
twall@clarku.edu
Office: (508) 793-8877

*Please rsvp with name, title, company and phone number

How to get there

 55 Lake Avenue North, Worcester, MA 01655

UMASS MEDICAL SCHOOL UNIVERSITY CAMPUS MAP



All Attendees need to bring a signed tour authorization form [click here](#) to access a copy

Directions

The UMass Worcester Campus is located in Worcester Massachusetts just north of Route 9, on the west side of Lake Quinsigamond, between Plantation Street and Lake Avenue North. The campus is easily accessible from many major highways.

From I-495:

Northbound: At exit 23, take Route 9 west. Follow Route 9 west for approximately 11 miles. After crossing the Lake Quinsigamond bridge, take first right onto Lake Avenue.

Southbound: At exit 25, take I-290 west to exit 22, turn right at end of ramp, at second traffic light turn left at onto Plantation Street and proceed south.

Park in the Pine tree lot, meet in the main lobby of the medical school. **Building with the blue overhanging metal canopy awning**